

.... *Let's build together.*



# TABLE OF CONTENTS

DRAFT

# COMPANY OVERVIEW

## ABOUT US

### **Lords Goodness Consult Limited (LGC) ... *Let's build together.***

Lords Goodness Consult Limited (LGC), is a full-service civil engineering and commercial construction contractor, located in Abuja, FCT, Nigeria. For over 10 years, LGC has provided construction engineering services, design, and asset management to various clients. Our company operates across the spectrum of engineering and property management, from the pre-purchase or design stage to maintenance and refurbishment. Our experienced engineers are knowledgeable in all relevant areas to provide clients with cost-effective solutions. Our clients are property professionals such as building surveyors, architects, management surveyors, construction consultants, building owners, and building managers, in both the private and public sectors.

LGC offers general contracting services to accommodate any phase of the client project. From pre-construction services through the designing, planning, construction, interior finishing, roofing, and even the landscaping of the client project, we can deliver the general contracting services you need on time and within budget.

.... *Let's build together.*

© 2023 – [Lords Goodness Consult Ltd.](#)

LGC has accomplished many construction projects in both private and public sectors in Nigeria, including Federal and State Government Agencies, and other reputable blue-chip companies in the areas of Mechanical, Electrical, and Civil Engineering and Construction, including road construction, bridges, and buildings.

LGC helps customers deliver projects of purpose that create a lasting positive legacy. These projects create jobs and grow economies; improve the resiliency of the nation's infrastructure; connect communities to resources and opportunity; get us closer to net zero; tackle critical environmental challenges; protect people and the planet; and accelerate progress to make the world a cleaner, greener, safer place.

LGC has the resources and knowledge to undertake just about any job. We are committed to safety and well-being above all.

*To learn more, visit our Vision, Values, and Commitments.*

With projects, people, and offices in more than 40 local government areas (LGA-Nigeria), LGC has unmatched reach and expertise. Construction regulations and labor laws vary greatly—and we have worked successfully under some of the toughest—we have a proven record of working smoothly with government agencies and labor organizations.

Major construction projects are complex undertakings, often involving dozens of subcontractors and suppliers, thousands of workers, and millions of Naira (NGN) in material, equipment, and services. Orchestrating such operations demands first-rate construction management—something LGC has provided for decades on projects big and small around Nigeria.

.... *Let's build together.*

## Expertise

- Managing the bid process and negotiating contracts
- Overseeing management, including field procurement, as well as receipt, inspection, and warehousing, materials, and issuing them to contractors
- Performing construction and field administration
- Commissioning and maintenance of operations

## Technology drives our business

We rely on advanced technology to deliver engineering and construction projects to our customers. Technology speeds schedules lowers costs and ensures quality. Our colleagues around the world in urban and remote locations perform increasingly complex design work, and technology enables them to work collaboratively in virtual environments around the world. This maximizes productivity.

We are continually developing information systems to improve our work:

- Data-centric execution: information in structured data form enabling advanced work process and job site automation.
- Highly interoperated and integrated application suites across the Engineering, procurement, and construction (EPC) landscape and into our customer operations and maintenance systems.
- Use of state-of-the-art advanced 3D, 4D, and 5D modelling systems and workflows.
- Cloud-based deployments supporting the demands of global execution.
- Highly connected workforce through the use of collaborative web and mobile solutions

---

.... *Let's build together.*

# COMPANY VALUES

---

## Our Goal:

Our goal is to maintain our recognition as one of the innovative and solution-driven civil engineering companies, aiming to deliver high-quality jobs and carry out our projects in the safest manner, in line with approved engineering standards and specifications, adopting global best practices.

## Our Purpose:

Our purpose is to make a positive impact in people's lives by creating unforgettable customer experiences and great engineering projects.

## Our Core Values:

We rely on honesty, discipline, and hard work. We believe our success can be attributed to upholding the following simple set of core values:

- We put God first in our lives
- We make safety and quality a priority in our work
- We are customer and relationship-driven
- We treat others the way we want to be treated

At LGC, our customers come first. An integral part of our DNA is creating long-lasting partnerships and working with our customers to identify their needs and provide solutions that support their success.

We realize that the engineering and Construction sector is undergoing a revolutionary transformation. We explore new ways to improve accuracy, efficiency, and transparency in key business areas while improving overall performance and client experience.

.... *Let's build together.*

Our corporate culture is based on our history of delivering value – for the success of our customers on construction sites around the country. We never lose sight of our roots. This is what motivates our employees to work together to develop innovative processes and manufacture high-quality products.

To address the needs of global infrastructure developers, service providers, and operators, LGC has a dedicated industry vertical Engineering, Construction & Operations (EC&O), focused on the domains of:

- Engineering & Construction
- Real Estate
- Facilities & Operations

Our deep construction industry knowledge integrated with our digital services provides clients the ability to lead the industry with technologies, solutions, and practices and to 'Be Digital' and 'Build Digital'.

## **OUR SERVICES**

Whether serving as a general contractor, project consultant, or design-builder, LGC provides full-service construction capabilities through all phases of development, from feasibility to commissioning. We also offer interior design services to help bring the client's brand to life, as well as a team to tackle small projects to keep your space running smoothly.... So, let's build together.

## **OUR APPROACH**

At LGC, we come to the table prepared. It's our job to make sure we understand your needs and expectations, so we start every project with our ears wide open. We are highly collaborative, involving our clients in as many conversations regarding the project, and always happy to sit down and hash out the details of the project. You need an experienced source by your side every step of the way.

.... *Let's build together.*

From our experience, great business relationships are built on a foundation of trust and transparency. For that reason, we offer an open-book, cost-plus pricing approach so that all costs are fully available to you throughout the construction process. This also allows you to be as involved as you wish during subcontractor selection and project pricing.

## **OUR PROJECTS**

LGC has partnered with a wide array of businesses and non-profit organizations to create customized facilities that they can proudly call home. Our goal is not to look at your project as a one-time engagement for our services. Rather, we are committed to meeting your objectives so we can become your "go-to" resource for your construction needs now and in the future.

### **Our Core Markets/Performance:**

- Road Construction
- Commercial Building construction and concessions
- Distribution center construction
- Hospitality facility construction
- Engineering Contracting companies

LGC has demonstrated the capability and technical know-how to undertake various engineering services while adopting global best practices in our methodologies. We are indeed very passionate about our success in various industries.

- ✓ **Consulting and Business Process Re-engineering**

### **Case in point**

At LGC, a national engineering and construction company, we re-engineer complete business processes to standardize and integrate fragmented project execution

.... *Let's build together.*



functions, across geographies ensuring not just statutory compliance but also delivering operational efficiency enabling better visibility, scalability, and integration across the business.

**What** - Identify and develop future technology and process roadmaps aligned to the strategic objectives of the Client company.

**How** - Design, re-engineer, and implement front office (bidding, project initiation, project planning, execution, and closure) and back office (finance, HR, payroll, procurement, supply chain, and contracting) processes.

**Benefit** - Drive transformations across the technology and process space combining industry domain capabilities with deep business process knowledge.

### ✓ **Partnering for new revenue streams**

#### **Case in point**

LGC has partnered with Raycon & Co. (NIG) Ltd., a multiple large construction enterprise, to transform their technology service delivery from a traditional construction service model to an on-demand catalog-based managed services model driving significant improvements in operational performance, employee experience, agility, and cost savings.

**What** – LGC creates market differentiation through an integrated suite of offerings

**How-** Assist client companies in taking bigger turnkey projects including smart applications, facility utilization design, and construction integration in new building and plant infrastructure contracts.

**Benefit-** Enable clients to increase their wallet share in large infrastructure projects.

Whether you're expanding and need a build-out, a new building, renovating an existing space, or just needing to replace your roof, our general contracting services will deliver the job to your exact specifications. Our planning and management capabilities allow us to offer

.... *Let's build together.*

solutions that get the job done with the least disruption to your day-to-day operations. We take pride in every job we do and are committed to serving clients with integrity and quality.

Our experience and knowledge in all aspects of construction make us your best choice for managing your project. After all, construction management is really the basis for all the work we do. Advantages to construction management include increased coordination between the design team, the subcontractors, and the client company resulting in fewer disputes, claims, and delays. Time and cost savings are also realized through compressed schedules throughout the design/construction process.

LGC has the heavy-duty equipment required for all civil works, including access to, and collaboration with Asphalt plants and Granite Quarry which could be mobilized to any part of the country for major projects.

We look forward to developing a mutually rewarding partnership. May the *Lord's Goodness* be our guide.

We welcome your enquiry.

.... *Let's build together.*

# STATEMENT FROM THE MD

Greetings, and Welcome to Lords Goodness Consult Limited (LGC)

It is with great pleasure and a sense of immense pride that I welcome you to our construction company's profile. Since our inception, we have embarked on a journey of transforming ideas into reality, and buildings into lasting legacies.

At LGC, we believe in the power of innovation, dedication, and collaboration. Our team of skilled professionals, ranging from architects and engineers to project managers and craftsmen, are the driving force behind our success. We have consistently strived to set new industry benchmarks by delivering projects that not only meet but exceed expectations.

In a rapidly evolving world, we understand the importance of adapting to change while upholding our core values of quality, integrity, and sustainability. Every structure we create is a testament to our commitment to excellence and our passion for constructing spaces that inspire and uplift communities.

At LGC, we believe in transforming dreams into reality through the power of construction. Our journey has been one of determination, innovation, and unwavering commitment to excellence. As the MD, I am immensely proud to lead a team of dedicated professionals who are passionate about building not just structures, but futures.

For over a decade, we have been at the forefront of the construction industry, shaping buildings and communities, and leaving an indelible mark on the landscapes we touch. Our projects are a testament to our expertise, showcasing the harmony between design, functionality, and sustainability. From road construction to intricate residential communities, each project we

.... *Let's build together.*

undertake is a reflection of our meticulous attention to detail, rigorous adherence to timelines, and unwavering focus on safety.

We also recognize our responsibility towards the environment and the communities we operate in. Through environmentally conscious construction practices and community engagement initiatives, we aim to make a positive impact that extends beyond the completion of our projects. As we look ahead, we are excited about the opportunities that lie before us.

What sets us apart is not just the bricks and mortar we lay, but the relationships we build. We prioritize collaboration and transparency, working closely with our clients, partners, and stakeholders to bring visions to life. Our client-centric approach ensures that every project is tailored to meet unique needs, surpassing expectations, and creating lasting value.

Safety is at the heart of everything we do. We consider it our moral responsibility to provide a secure environment for our workforce, clients, and the communities where we operate. Our adherence to the highest safety standards has earned us the trust and respect of those we serve.

As we look ahead, we remain committed to pushing boundaries, embracing innovation, fostering sustainable practices, embracing technological advancements, and delivering exceptional value to our clients. The future of construction lies in our ability to adapt, and we are excited to lead the way with eco-friendly technologies and forward-thinking solutions.

Thank you for choosing LGC as your construction partner and for your construction needs. Whether you're envisioning road construction or enhancing existing infrastructure, we are here to bring your dreams to fruition. Together, let's build a future that's not just made of bricks and steel, but of dreams realized, sustainable, and aspirations achieved.

We will continue to build not just structures, but a legacy of excellence... *Let's build together.*

Warm Regards,

*Elijah Olorunnipa*

**Managing Director**

.... *Let's build together.*

## OUR EXPERIENCE

---

### CIVIL ENGINEERING

---



LGC is a civil engineering firm that offers a full range of services, including survey, site, and civil geotechnical, environmental, and construction administration. These disciplines complement our work on civil projects to provide solid solutions that exceed our clients' expectations.

.... *Let's build together.*

Our civil engineering expertise includes road construction, bridges, and buildings, and Site Planning. industries in Nigeria.

We have the flexibility to provide creative civil engineering solutions to tackle extraordinary and unique construction projects. Whether it's inspecting or creating a site development plan, LGC can deliver expertise in Civil Engineering.

LGC's company capabilities are far-reaching in Land-based operations. Our expertise in Civil Construction works has proven that we are a strong company that can offer quality Engineering design as well as Material procurements and supply. Our excellent supervision and skilled manpower employ efficient and modern heavy-duty equipment and tools for the execution of projects, resting, and commissioning. LGC has accomplished projects that include but are not limited to:

- » Site and Civil Engineering
- » Construction of dual carriage Roads and Bridges
- » Construction of Buildings

## CONSTRUCTION ADMINISTRATION



.... *Let's build together.*

Lords Goodness Consult Limited – Profile (2003)

Our Construction Administration team approaches our clients' projects as if they were our own. We work to keep projects running smoothly by providing project oversight and field inspections to ensure proper protocol is followed with each step.

We perform as “an extension of the client's staff” to meet their safety and quality expectations, maintain clear communication, and work with the Client to stay on schedule, resolve issues at the lowest possible level, and control the project costs.

Services:

- » Project Oversight
- » Field Inspection
- » Field Monitoring
- » Pay Item Documentation
- » Material Testing
- » Material Documentation
- » Project Closeouts

---

**CLIENTS:**

---

**HERE ARE JUST A FEW OF THE SATISFIED  
CLIENT COMPANIES WE'VE WORKED WITH  
OVER THE YEARS ...**

- Federal Ministry of Agriculture – [www.fnard.gov.ng](http://www.fnard.gov.ng)
- Federal Ministry of Water Resources – [www.waterresources.gov.ng](http://www.waterresources.gov.ng)
- The Independent Corrupt Practices Commission (ICPC) – [www.icpc.gov.ng](http://www.icpc.gov.ng)
- Michael Imoudu National Institute for Labour Studies – [www.minils.gov.ng](http://www.minils.gov.ng)
- National Productivity Center –

.... *Let's build together.*

© 2023 – [Lords Goodness Consult Ltd.](#)

[www.productivity.gov.ng](http://www.productivity.gov.ng)

- Ogun State Government –  
[www.ogunstate.gov.ng](http://www.ogunstate.gov.ng)
- Osun State Government –  
[www.osunstate.gov.ng](http://www.osunstate.gov.ng)
- Raycon & Co. (NIG) Limited –  
[www.raycon.net](http://www.raycon.net)

... and many other related and progressive construction projects. This further exemplifies and validates our work experience.

## The Future:

---

The Engineering and Construction industry is undergoing a revolutionary transformation, exploring new ways to improve accuracy, efficiency, and transparency in their key business areas while improving overall performance and user experience.

In a world that is changing quickly, it is essential that Civil Engineering practices adopt progressive business models based on innovative governance methods and practices to improve public/private services for our customers. The trends helping to create this change include changing demographics, such as a growing population and increased urbanization, which means the need for interconnectedness in the construction of roads and bridges. In this environment, the e-commerce revolution and the rise of digital technologies are fundamentally reshaping customer expectations and the function of civil engineering toward useful customer experiences.

To address the needs of global infrastructure developers, service providers, and operators, LGC has a dedicated industry vertical Engineering, Construction & Operations (EC&O), focused on the domains of:

- Civil Engineering & Construction
- Building of Houses (Real Estate)

.... *Let's build together.*



- Facilities & Operations

Our deep industry knowledge integrated with our digital services provides clients the ability to lead the industry with technologies, solutions, and practices and to 'Be Digital' and 'Build Digital'.

At LGC, we realize that to survive in the digital age, road construction will need to reinvent itself through robust engineering. Collaboration, co-production across government sectors, and access to usable information from multiple sources are equally important in attaining our objectives. Government performance relies on innovation and technology to effectively run a "connected republic"—the next phase of e-government transformation where civil engineering communities are at the center of new networks of knowledge, service, trust, and accountability.

With our robust portfolio of advanced engineering technology and world-class offerings, LGC is committed to supporting "Next Generation Engineering Construction" in order to meet the demands of its stakeholders in the 21st century and beyond.

Thank you for being part of our company's success. We look forward to working with you.

We welcome your enquiry.

**FOR LORDS GOODNESS CONSULT LIMITED**

*Elijah Olorunnipa*

**Managing Director**

**Tel: +234-803-373-8461**

**Email: [daroovision@gmail.com](mailto:daroovision@gmail.com)**

**Visit: [www.lordsgoodness.com](http://www.lordsgoodness.com)**

.... *Let's build together.*

# Photo Galary – Ongoing & Completed Projects

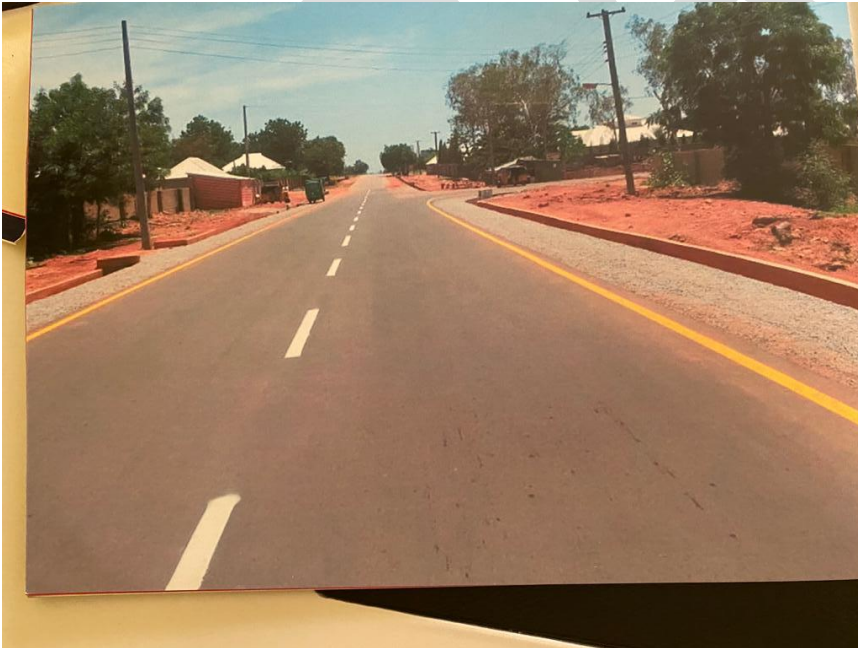
---

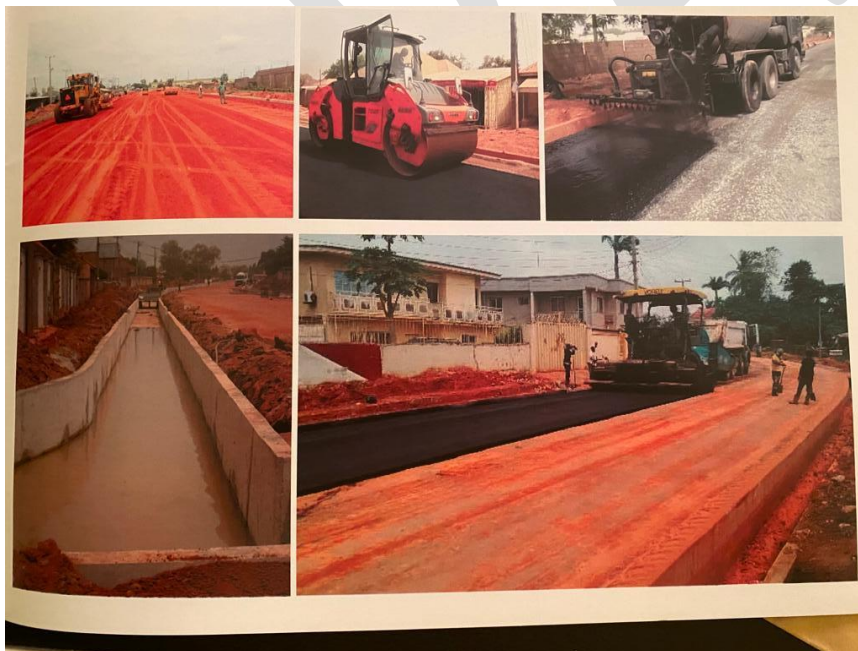
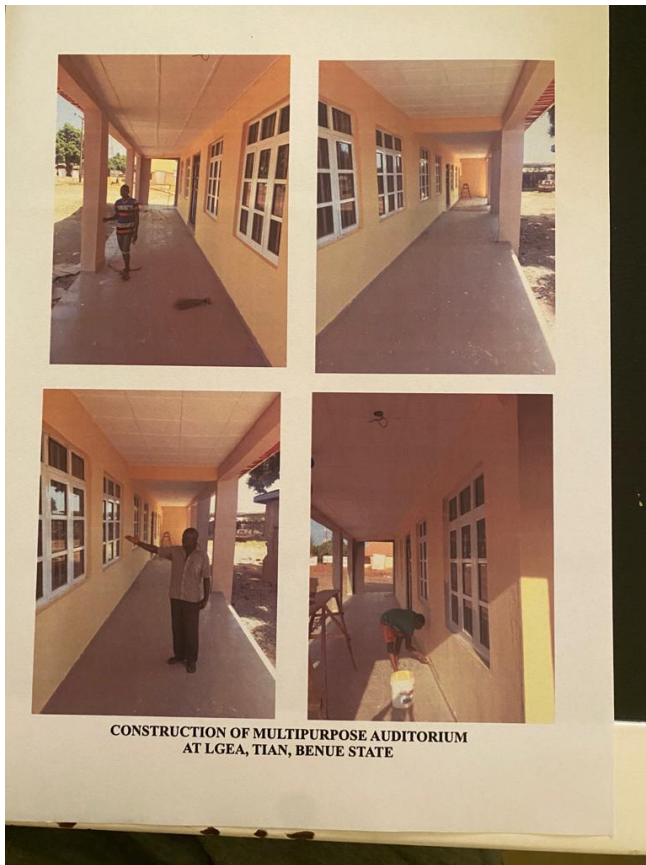


.... *Let's build together.*

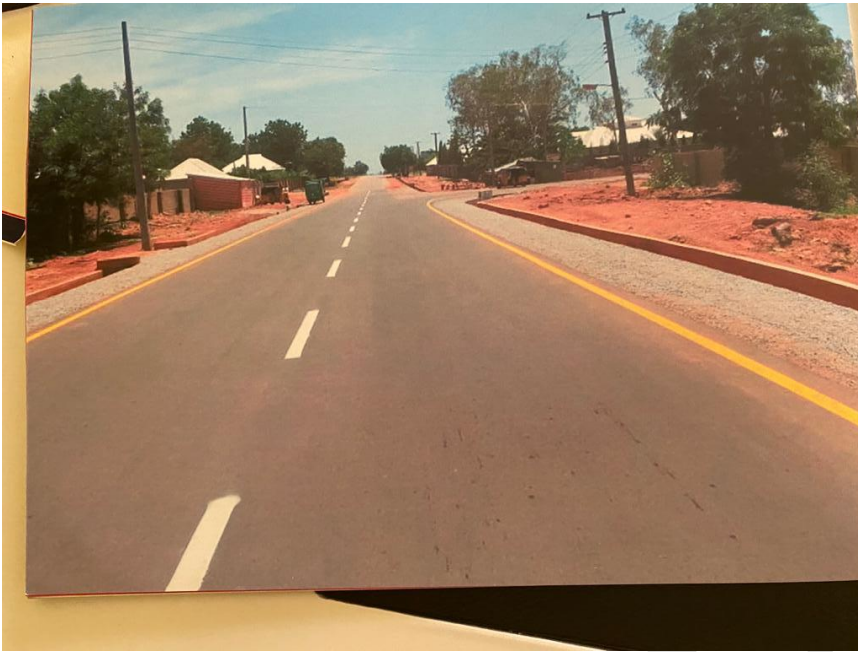


.... *Let's build together.*





.... *Let's build together.*



## Project Completion **Certificates**

---

## Client's **Testimonials**

---

DRAFT